

REBHAN®

Kunststoffverpackungen

REBHAN FPS Kunststoff-Verpackungen GmbH

Kronacher Straße 19 | D-96342 Stockheim

E-Mail: info@rebhan.de

Telephone: +49 9265 750



www.rebhan.de



March 2026 | Subject to change

REBHAN®

Kunststoffverpackungen

CERTINA PACKAGING GROUP

Achieving More Together - Beyond Borders.

The companies in the **CERTINA PACKAGING GROUP** are highly specialized experts for innovative and sustainable plastic packaging, and can look back on a total of 300 years of plastic processing experience.

Thanks to our different manufacturing technologies, which range from **injection moulding** to **plastic blowing processes** and **co-extrusion**, we offer our customers the major advantage of implementing the best possible packaging solution for their product lines across companies. The cosmetics industry is particularly reliant on our expertise for producing top quality brand packaging.

Our comprehensive **standard portfolio ranges** from bottles and flacons with a wide variety of closing and dispensing options to jars and cans and also sticks and roll-ons. However, we also develop **tailored solutions** for customer-specific packaging requirements. Our wide range of in-house refining techniques such as screen printing, lacquering, hot foil stamping and metallization are an invaluable advantage, which give the brand packaging the company's individual look and make it unmistakable.





REBHAN – YOUR PARTNER

for Innovative, High-Quality and Sustainable Packaging Solutions.

As a competent specialist for **high-quality plastic packaging**, we collaborate with numerous, internationally renowned brands from the cosmetics, parapharmaceutical and household sectors.

We offer you a wide range of high-quality standard bottles as well as **customised packaging solutions** precisely tailored to your products and requirements. We can offer inhouse solutions, that with your co-operation, will deliver really innovative ideas and individual solutions for your products. At REBHAN, we can provide everything you require out of one hand: from product-specific development and customised decoration to professional project management!

Thanks to our two subsidiaries REBHAN OPAKOWANIA (Poland) and TRASSL POLYMER SOLUTIONS (Germany), we are able to increase our production capacity and expand our range of products in the chemical sector.



CUSTOMER-SPECIFIC DEVELOPMENTS

Unique Products Need Distinctive Packaging.

Do you have a very specific packaging idea that would perfectly present your product? A flacon, bottle or roll-on with characteristic features not yet seen on the market? We are happy to accept this challenge and develop an individual approach with you.

Our **customised development process** starts with design feedback on the feasibility of your individual bottle shape, followed by the manufacturing of prototypes. After the definition of the desired material composition and with due consideration of the environmental specifications, we start the serial production – including the development and manufacture of your individual tooling, finishing, quality control and shipping.

Thanks to the **professional support** of our experienced experts, creating a tailor-made solution is easier than you may think.



^ More references in our blog at rebhan.de/blog.html

EVOLUTION HDPE



COLONNA LOW SHAPE PP



COLONNA GLASS-LIKE



OPTIMA HDPE



FOAMER HDPE



BRIA LOW SHAPE HDPE



SPA DE LUXE GLASS-LIKE & SPA HDPE



OUR STANDARD RANGE

Extraordinary Forms – Individual Configurations & Finishes.

Thanks to decades of experience in the development of plastic packaging, we can offer you a broad portfolio of high-quality standard series, which is consistently being expanded.

- > Variety of **shapes** – round, oval or square
- > Wide range of **materials** – HDPE, PET, Heavy Wall PET or Glass-like PET
- > Various **recycled** materials and **biobased** alternatives
- > Different **weights** or **material mixtures** (LDPE, HDPE)
- > New range of **airless products**
- > Wide range of **volumes** – from 7.5 ml to 1,000 ml
- > Variably configurable through different **closures** and **accessories**

All standard series can be produced in the colour of your choice and finished in our inhouse decoration department. Of course, all our products are also available in sustainable materials or can be manufactured with various shares of recycled plastics.



FOAMER PET



GLASS-LIKE POLYMERS

An Innovative Packaging Material
with Unique Characteristics.



REBHAN Glass-like flacons impress due to their **striking resemblance to glass**: from their brilliance and typical light refraction to their absolute transparency. They convey the feel of luxury and are certain to perfectly showcase your product with their thick gauge walls and bases. In addition, Glass-like products are **exceptionally robust** and **ideal for daily use** both at home and when travelling. Their extreme resilience makes them **virtually unbreakable**, and protects the contents, the customers and their surroundings.

The colouring of the Glass-like products forms part of the extrusion process and the wide range of our inhouse finishing options enhance the customisation possibilities. The innovative development of recyclable polymers with molecular recyclates specifically for the extrusion blow moulding process now also allows for sustainable options.





ELIXIR
GLASS-LIKE



PURE
GLASS-LIKE

QUATTRO & QUATTRO SLIM
GLASS-LIKE



EDGE
GLASS-LIKE



BRIA
HDPE



BRIA FOAMER
HDPE



BRIA
GLASS-LIKE



DIAMOND
GLASS-LIKE



ROLL-ON
GLASS-LIKE



BRIA SLIM
HEAVY WALL PET

Here we have compiled a small selection of our

REBHAN STANDARD SERIES



BRIA
PET



COLONNA LOW SHAPE
GLASS-LIKE



SPA DELUXE
GLASS-LIKE

COLONNA
GLASS-LIKE



BRIA
HEAVY WALL PET



BRIA LOW SHAPE
HDPE



HEAVY WALL PET

Heavy Wall PET provides your packaging with **much higher stability and strength**. They are not only easily **recyclable** but can also be produced from even **recycled PET** on request.



PET²AIR

Pouch-in-Bottle Airless-Packaging

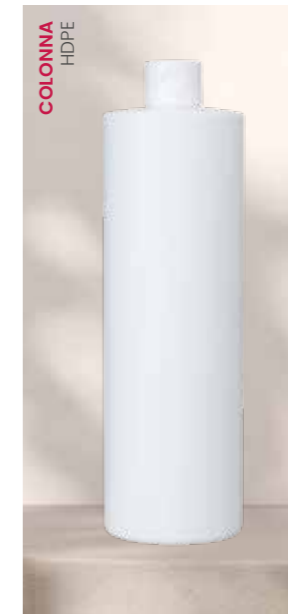
Emptying Capability approx. **97%**

INNOVATION

Our sustainable packaging solution that combines product protection and sustainability without design restrictions.

Packaging innovation made from monomaterial PET (outer bottle PET or rPET, pouch virgin PET) reliably **protects the formulation from air, contamination and oxidation**. At the same time, it allows for **almost complete and residue-free removal** – for particularly efficient use of cosmetic and skincare products.

In cooperation with **INOTECH**





The complete REBHAN standard range, all volumes, materials and accessories can be found in our **online product catalogue**. Accessible at any time and from anywhere at

catalogue.certinapackaging.com





In **co-extrusion**, recycled or bio-based materials can be integrated as an inner layer (up to 50%), while virgin material on the outside ensures a high-quality appearance and on the inside provides reliable product protection.

CO-EX



OUR GREEN LINE CONCEPT

We Set the Course towards Sustainability at an Early Stage.

Environmental awareness is prioritized in all company processes. We constantly implement this focus in the development of new, sustainable packaging solutions. In addition, we continuously research environmentally friendly alternatives for packaging without compromising the exclusivity of the final product.

No matter which form of packaging you choose, we will find a sustainable way to produce it!

- > **Recycled** materials / PCR (rPET, rHDPE, rPP)
- > **Ocean Bound** materials
- > **Biobased** materials (e.g. from tall oil or sugarcane)
- > **Molecular** recycling
- > **REFILL** solutions

The use of special, non-standard materials requires a high degree of expertise and experience. The professional and successful handling of such materials is one of our core competencies.

Learn more about our Green line concept >



DECORATIVE FINISHINGS

Customize your Packaging.

Our wide range of decorative finishing options and many years of experience in decorating plastic packaging leave no design wishes unfulfilled.

- > **Screen printing,**
- > **Hot foil stamping,**
- > **Lacquering** (matte / glossy, special effect, gradient),
- > **Metallisation** or
- > **Lasermarking**

are effected inhouse - you receive everything from a single source and have just one contact person.

Enhance your packaging with an extraordinary feel, texture or embossing, which we realise with tooling specifically developed for your product. Or upgrade your bottle with exceptional masterbatches such as the iridescent batch, Frost-Batch or Adflex.

Learn more about our wide range of inhouse decoration options >



LACKIERUNG



METALLISATION



HOT FOIL STAMPING



HOT FOIL STAMPING



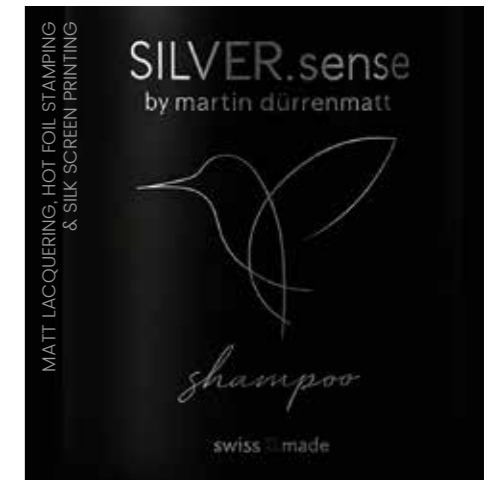
MATTE & GLOSSY LACQUER



STRUCTURE WITHIN THE TOOL



SILK SCREEN PRINTING & HOT FOIL STAMPING



MATT LACQUERING, HOT FOIL STAMPING & SILK SCREEN PRINTING



LASERMARKING



IRIDESCENT COLOUR BATCH



GRADIENT LACQUERING



REBHAN TECHNOLOGIES

State-of-the-Art Technology Allows for Maximum Flexibility.

In order to process diverse types of plastics and to create exceptional packaging, we work with a wide variety of manufacturing processes and the most current machinery in our production division:

- > **Extrusion blow moulding** (EBM)
- > **Co-extrusion** (Co-EX)
- > **Injection stretch blow moulding** (ISBM)
- > **Injection blow moulding** (IBM)
- > **Injection moulding** (IM)

We prioritise the professional use of cutting-edge technologies – be it in production or decoration. To ensure consistent top quality, flexibility and efficiency, we continuously invest in our machinery pool. Recently, we have enhanced it by **two state-of-the-art five-colour screen printing machines** as well as a **coating system**.

[Learn more about our production technologies >](#)

